

The MISSIONARY WORKER

ORGAN OF THE
BRITISH UNION CONFERENCE
OF
SEVENTH-DAY ADVENTISTS

The Gland Council

By Our New President, ELDER J. E. JAYNE.

THE British Union Conference is now an integral part of the European Division Conference. That arrangement was voted by the General Conference of Seventh-Day Adventists at its quadrennial session held in San Francisco during the spring of 1922. The plan became effective on January 1, 1923.

The territory included in the European Division Conference is all of Europe, a small portion of Western Asia, Egypt and the British colonies in Africa.

In this Division there are nine union conferences, namely: British, Central European, Czecho-Slovakian, East German, Latin, Rumanian, Russian, Scandinavian and West German.

Its missions include those of Iraq, the Levant, Egypt, Hungarian, Jugo-Slavian, Russian, Poland, Turkey and the British colonies in Africa. Pastor W. E. Read, formerly of England, is one of the secretaries of the European Division. He resides at Berne, and has supervision of these missions. Under this arrangement the offerings for missions gathered in the British Union Conference are part of the funds belonging to the European Division Conference and are used in helping to sustain its missions. The British African colonies continue to be the special mission fields to which labourers are sent from the British Union.

Head-quarters for the Division are in the city of Berne, the capital city of Switzerland. A property well adapted to the use of the Division offices has been purchased at a very reasonable cost. These offices have been occupied since November, 1922.

Our principal educational institutions are nine in number, one of which is located in each of the following countries: England, Denmark, Finland, France, Norway and Sweden, while the remaining three are at Wurtemberg, Magdaburg, and Neandertal in Germany. We have seven sanitariums, one of which is located in each of the following countries: England, Denmark, Norway and Switzerland, while the remaining three are at Upper Bay-ern, Zehlendorf and Friedensau, in Germany.

We have nine publishing houses, one of which is located in each of the following countries: England, Czecho-Slovakia, Finland, France, Germany, Jugo-Slovia, Norway (with a branch in Denmark), Rumania and Sweden.

The Winter Council of the European Division was held in Gland, Switzerland. It closed early in January, 1923. During the entire council there was manifest a very cordial, Christian fellowship. Delegates were present from all countries except Russia. The official language used was English. Records of the proceedings were made in that language and

speeches were translated into those languages understood by all other delegates.

Careful study was given to plans for the co-ordination and advancement of our work throughout the territory of the entire Division.

It is apparent that we shall soon be enabled to render very great spiritual and material assistance to our brethren in Russia. Plans were made whereby we shall be in readiness to do this at the very first opportunity.

Political disturbances in Asia Minor, Thrace, Constantinople and Greece have imposed upon the people of these countries unspeakable hardship and suffering. Our brethren have shared in this to an extent that we shall never know. Some of them have lost their lives; others are prisoners. The accounts of their sufferings given by many of our women and children who have arrived in other countries constitute a wonderful revelation of the gracious care of God for His faithful people. These stir our hearts to profound depths of gratitude.

It was decided to establish a new sanitarium in Bucharest, Rumania. The money for this purpose is being given by our sanitarium in Skodsborg, Denmark. The Lord has greatly blessed that institution so that it is building this new sanitarium at Bucharest out of its operating profits.

Our sanitarium at Zehlendorf has likewise prospered greatly. It has accommodation for 110 patients and during last year 95 per cent of its beds were occupied every day. In Jugo-Slovia almost all the physicians perished during the war. There is great lack of medical assistance for the people. Preliminary attention was given to establishing our medical work there.

In rearranging and co-ordinating our work throughout the Division with the object of providing more active evangelistic work and greater missionary endeavour throughout the local fields and churches of the Division, it was decided to hold a general meeting for the entire Division during the summer of 1923. Doubtless this will be held at Neandertal, Germany. That this may be done, all union conference sessions will be held during 1924 instead of during the summer of 1923 as formerly planned. Hereafter these union conference sessions will be held once in four years instead of in two years as was formerly done. Sessions of each local conference will be held each year instead of once in two years as formerly. Also district meetings and institutes will be held in each local conference as often as may be found profitable.

Such an arrangement should result in greater local activity and the rapid extension of our work through the churches constituting the Division.

HOME MISSIONARY DEPT.

Another Church in Line.

LIVERPOOL, with many of the other churches, is starting the year with a full programme. Plans are in hand for every department. Brother Hall says: "We are getting the people here to work. 42/- worth of tracts have been purchased and will be distributed in a systematic manner. On Sabbath we organized a young people's society with a roll of eleven members and associates. We are determined to have all the churchmembers in the Sabbath-school this year. We are organizing a canvassers' band, and prayer bands, also a Dorcas society and a Bible-readers' class. On February 8th we shall hold the first of a series of health meetings. So you see Liverpool is alive."

All will agree that Liverpool's claim to be alive is well grounded. "A working church is a living church." We sincerely hope that every one of our churches will make plans for increased interest and activity in every line of work.

"Those who have the oversight of the churches should select members of ability and place them under responsibilities, at the same time giving them instruction as to how they may best serve and bless others."

"Let those who have charge of the flock of Christ awake to their duty and set many souls to work."

"In every church the members should be so trained that they will devote time to the winning of souls to Christ. How can it said of the church, 'Ye are the light the world,' unless the members of the church are actually imparting light?"—*"Testimonies," Vol. 6, pp. 431-439.*

These and many other statements of a similar nature show plainly the work of training and service to which the people of God are called. It is a source of encouragement to see groups of believers coming into line with this instruction. Shall we not make great sacrifices during 1923 in genuine soul-winning endeavour. We should be glad to hear from other churches.

J. HARKER.

Half Hours With the "Testimonies."

We invite all our members to join with us in a systematic study of the "Testimonies." These volumes contain precious light, but it is stated that "many are going directly contrary to the light which God has given to His people, because they do not read the books which contain the light and knowledge in caution, reproof and warnings." If we fail it will not be because God has left us without counsel. Then let us set aside a definite time each week for a careful reading of "the books which contain the light and knowledge" we so much need.

By an action of the British Union Conference Committee, volume 5 of the "Testimonies" was selected for our study during 1923. This volume, which is the largest of the original nine, is full of timely instruction in practically every phase of Christian experience. It is regarded from a general standpoint as being the best of the set. To meet the needs of those who do not possess this book, the Stanborough Press is making a special offer of Vol. 5, containing 770 pages with complete index, at the very small cost of 2/6 plus 9d. postage. Order your book at once and plan to commence reading March 4th.

J. H.

Y.P. AND S.S. DEPARTMENTS

WANTED! £300 For Nigeria from Our Missionary Volunteers.

Recently while visiting one young people's society in London, where we were privileged to talk about the young people's goal and its specific object, "Nigeria," the leader of the society said, "We have averaged threepence per week per member." This is a splendid example worthy of imitation by all young people's societies in this country. We are very anxious that all our young people shall have a part in helping to open up the work in Nigeria.

Nigeria is not a small country. It is as large as Germany, Holland and Italy combined, and is nearly three times as large

as the British Isles. It has a population of nearly 18,000,000.

"Experience shows that the old paganism will crumble before European civilization; what is to take its place?" These are days of crisis for Nigeria; the British Empire is recognizing the importance of the Protectorate and its possibilities: *will the empire builders of the King of kings lag behind?* Missionary Volunteers! Let us pray for Brother and Sister Clifford as they open up the work in the Niger Delta. Think about the great needs in Nigeria. Go on to action, raise the £300, rejoice at the ingathering of souls, and when the work is done be, with all the redeemed, gathered home.

W. J. YOUNG.

Teachers! Are You Ready?

Ready for what? For the 1923 Sabbath-School Teachers' Training Course? You are not ready unless you have the text books which will be used. Now is the time to get ready, for the studies begin in March.

Text books needed:—

1. "Soul Winning." By G. B. Thompson.
2. Selections from "Training the Teacher."

When ordered together the two, post paid, 5/6.

For full details of the course see "Sabbath-School Worker" for February. No teacher can afford to miss this course of studies. Order the books at once through the Stanborough Press and so be ready to follow the outline studies as they appear in the "Sabbath-School Worker" each month.

This affords a splendid opportunity for every teacher to reach one of the goals set at the beginning of the year, namely,

"Every teacher a personal worker and qualifying to be an ideal teacher."

W. J. YOUNG.

The Press Circulation Department

WE have received a number of inquiries about the new edition of "Daniel and the Revelation." This book contains exactly the same matter as the regular edition—the same illustrations and coloured plates. The only difference is in the binding which is an attractive red cloth stamped with dark green ink. The edges are plain. There never was a cheaper book, even in pre-war days. Think of it, brethren, only 7/6 with the usual discount to canvassers and tract societies. Prospectus for the 7/6 edition 6/-, back strip only to paste in regular prospectus, 3d. each. Here is an opportunity for those who need a quick selling book to assist them financially. Church missionary secretaries will be well advised to note the money earning possibilities this book affords. It would make a splendid Relief Book for churchmembers to sell turning in all the profits to their church tract societies.

PLEASE note that reference to the discount allowed to canvassers and church societies should be enclosed in sealed envelopes and not sent on a post-card open to the public eye.

THE circulation of "Present Truth" is improving. We printed 31,000 copies of No. 3, and if the belated orders received had reached us in time the edition would have been more. There are still more orders for the February "Good Health" coming in that we cannot fill. This is a great pity and need not occur if our brethren and sisters would send their orders on time. The date for ordering March "Good Health" which, by the way, has a fine two-colour cover, is February 18th together with "Present Truth" No. 5. "Good Health" will be ready February 15th and we can guarantee all orders up to the 25th but beyond that date there is no guarantee.

OUR brethren and sisters will be glad to know that we are now able to fill orders for that excellent book, "In Touch with God," which has been out of stock for some time. This is a devotional book, abounding in spiritual experiences which cannot fail to deepen the prayer life of the church. Let us not neglect such literature, brethren; a copy should be in every S.D.A. home and church library. Price post paid, 6/-.

WE regret that we are unable to fill any more orders for "The Morning Watch Calendar" and Sabbath-school Quarterly. 5,000 copies of the Calendar were printed, and here again many late comers have been disappointed.

IF any of our brethren have surplus copies of "Our Paradise Home" they can spare we shall be glad to receive them. Send them on properly packed and we will credit you with their value plus the carriage.

THAT excellent story, "Straightening Out Mrs. Perkins," price 6d., to our people 4d., is temporarily out of stock. But send in your orders; we shall have a good supply in the course of a week or two.

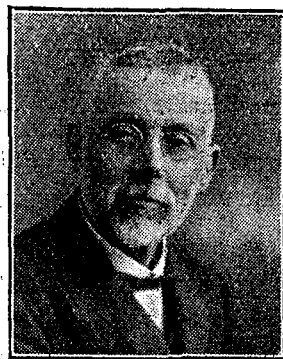
E. H. M.



A. E. Bacon.

NORTH ENGLAND CONFERENCE

President: A. E. BACON.
 Sec. Treasurer and S.S. Sec'y: W. G. BALDRY.
 F.M. Sec'y: G. KING.
 H.M. and Y.P. Sec'y: F. W. GOODALL.
 OFFICE ADDRESS: 22 Zulla Road, Nottingham.



W. A. Hall.

Our Task.

ALREADY the first month of 1923 has passed into eternity. How quickly the time passes! The newly-formed North England Conference is thirteen months old. We have had an opportunity of getting somewhat acquainted with our field during these months, and have not only learned to love it, but to realize a little of the stupendous task it presents before us.

As we pointed out in the last issue of this paper, our conference is largely composed of vast industrial areas. We have a population of nineteen and a half millions, which makes this numerically the largest conference in the British Union. Thirty-two out of fifty of the largest cities and towns in the United Kingdom are within our conference borders. A number of these centres are especially mentioned by the Spirit of Prophecy.

In drawing up our budget for 1923, and thinking over our plans for aggressive work this year, we were led to study our field very closely. It is our purpose, at this time, to set before you all some of the results of our careful study and investigations.

We find that 13½ million people out of the 19½ millions in our conference live in the cities and towns of over 20,000 inhabitants. We invite you to note diligently the following facts about the number, size, and work accomplished in many of these large towns and cities: We have 60 with a population of between 20,000 and 30,000 (an average of 24,354 each), 55 of which await the coming of the living preacher; 28 with a population between 30,000 and 40,000 (an average of 34,345 each), 25 of which have not yet been entered by the evangelist; 19 with a population between 40,000 and 50,000 (an average of 43,488 each), 15 of which are waiting for present truth; 8 with a population between 50,000 and 60,000 (an average of 53,890), ALL of which await God's message for to-day. All we have in these 8 large places, by the way, is ONE isolated sister. Then we have 10 cities with a population between 60,000 and 70,000 (an average of 65,137 each), 7 of which are waiting for the light of truth; 9 with a population between 70,000 and 80,000 (an average of 74,935 each), 3 yet to be worked; 4 with a population between 80,000 and 90,000 (an average of 85,518 each), ONE only to be entered; 5 with a population between 90,000 and 100,000 (an average of 95,516 each), 4 waiting for our ministers to come; 15 with a population between 100,000 and 150,000 (an average of 123,192 each), 8 of these big cities waiting for the third angel's message; 2 cities of nearly 200,000 each, both waiting for our ministers to come with the truth for these days. In one of them we have two isolated members and in the other only one member. In the still larger cities and towns something has already been accomplished.

Now what is the significance of these figures? and what should they mean to us as a people? These unwarned millions must hear the message in this our day and generation. Then surely every church and company should aim to develop its own talent as quickly as possible, in order that it may carry its own local responsibilities, and thus set free our conference workers for the unentered portions of our field. It is a call to EVERY MEMBER to be faithful in the payment of his tithe, that a larger number of workers may be employed, a more aggressive work carried forward, and many more souls led to rejoice with us in the soon coming of our Lord and the speedy triumph of His work in the earth.

Our task, humanly speaking, is impossible of accomplishment in this generation. But, brethren and sisters, *it will be done*, and at God's appointed time. He invites us to co-

operate with Him, and to be the channels through which He will finish His work gloriously. Let one and all respond, saying, "Here am I, *use even me.*"

ALFRED E. BACON.

Nottingham to the Fore!

1922 was faced by our church with many hopes and fears. The coming of the conference head-quarters—what would it mean? The wonderful possibilities of having such a privilege loomed large in the eyes of all our members. We were expecting great things!

Then the calling away of our dear Pastor Hall—how should we fare without his earnest, watchful interest and his inspiring addresses on prophecy? These experiences, together with the stirring up that was given by the departmental secretaries of the conference, made 1922 a year long to be remembered.

Difficulties naturally came our way, but through the help of God we have safely pulled through. What about our record for the year? Notwithstanding the financial situation and the terrible slump in the trade of Nottingham, we are pleased to report increases.

Our offerings to missions were the *largest* in the history of the Nottingham church. The Sabbath-school offerings were increased by £43. The annual offering by £35. Our tithe was only £9 short of the previous year. During 1922 there were four added by baptism, bringing our membership up to ninety-seven. We were sorry to lose our Bible-worker, Miss A. F. Clarke, who has rendered good service among the young people as well as the members. Beginning the new year with a few alterations in the officers, we have very carefully organized our members for a year of active service. Each department has a committee of its own, which is responsible for all plans in connection with that portion of the work of the church. At our prayer meeting, where we have an average attendance of thirty, special consideration is given to topics of practical interest and instruction.

As we look into the new year we see further opportunities for larger service, and we hope to see many more leave the ranks of Satan and link up with the church of the living God.

In this great city of over one-quarter of a million people, we are in most urgent need of a building to suitably accommodate our members, and at the same time have an open door for the people to come and hear.

We therefore invite your earnest attention to the following appeal:—

Some three years ago the late Pastor J. D. Gillatt conducted an effort in Nottingham, which resulted in a large number being added to the church. We were glad to have this rich harvest of precious souls. As we were without a church building, the difficulty arose as to how we should find room for them all in our small—very small—upper room (the only one available). It was therefore suggested that we start a building fund, and thus obtain a building of our own. Many and varied have been the methods adopted to reach that place where we could safely commence building operations without being burdened with debt. The Lord has certainly blessed our efforts. In spite of the fact that Nottingham's staple industries have been very badly hit, and consequently many of our members thrown out of employment, we have managed to raise close upon £500. Many earnest prayers have ascended to the Father's throne beseeching Him to specially bless our efforts and supply our needs.

We are now faced with an ejectment order and it appears as though we shall have to leave our little upper room by the end of March. May we hope that our great need will touch a

responsive chord in the hearts (and pockets) of our loyal members throughout the British field? We need an additional £200 before we can commence building, and we would very much appreciate both small and large gifts, which will be gratefully acknowledged by J. Williamson, 2 Dunkirk Road, Lenton, Nottingham. *Will you help us?* F. W. GOODALL.

Liverpool Alive!

WITH the new year a determined effort is being made to make it manifest that the Lord has some living witnesses in this stronghold of Satan.

In the past much has been done in Liverpool and the neighbouring places to advance the cause of truth. At intervals special efforts have been held in tent and hall by some of our faithful ministers, including Elders E. E. Andross, M. A. Altman, A. S. Rodd, W. Maudsley, and more recently Elders J. Bell and J. McAvoy. For years Brother Drew faithfully held aloft the torch of truth, sending the Spirit-filled literature to the ends of the earth by the stately ships that leave this world-famous port. Brother G. F. Jones, too, in the early days planted the truth in many hearts and homes. Sister Sanders also had a notable share in sowing the good seed that still bears fruit.

The faithful souls who, through the labours of these and other workers, were won for Christ, have entered zealously into the work of witnessing, and many thousands of books, magazines, papers and tracts have been placed in the homes of the people, which though apparently resulting in little fruitage, will yet be seen to have accomplished their part in bringing light to those who sat in darkness and the shadow of death.

The writer has been here now just twelve months. Conditions have made the work somewhat hard but enjoyable, and now a loyal spirit generally prevails, and the people have a mind to work. This is attested by the fact that all four of the churches and companies in this district in the Ingathering effort of 1922, hard as it was, exceeded their totals for 1921; two of them, Liverpool and Waterloo, passing their goals, and this with a decreased membership and the absence of one member who in 1921 gathered about £40.

These two churches with a combined membership of fifty-nine, have paid £342 tithe, and raised £288 in offerings during the year. They sold upwards of 10,000 copies of "Present Truth," nearly 1,000 copies of "Good Health," about 150 books and pamphlets and distributed 12,000 pages of tracts.

Now a forward move is being made along the various lines of church activity. A young people's society has been organized under able leadership, a canvassing band and tract bands are shaping, with the definite aim of placing our Spirit-filled literature in every home, and keeping track of the same. Prayer bands have been started to strengthen the hands, and call down heaven's blessing upon the efforts of these front line forces.

A Dorcas band and a Bible-reader's class commence their activities this week, the plan being to have the whole church doing something. Finally in about a week from this time of writing an attempt will be made to direct attention to the right arm of the message, when a health lecture will be given with the assistance of two local sisters in the nursing profession. All with but one objective—souls!—souls saved in the kingdom. Brethren, pray for us. WM. A. HALL.

Baptism at York.

It was with willing hands that we drew aside the "curtains of our habitations" to admit eight more precious souls into the bonds of fellowship. Assured were we that the divine cords of truth had bound their hearts as they witnessed a good profession by going forward in the holy ordinance of baptism. We were glad to have the services of Pastor Bell who conducted the baptism in the Spen Lane Mission Hall on Thursday, December 14th. The same evening, after the holy rite had been administered, the candidates were received into church fellowship.

The gripping power of the message is being felt in the hearts of others in this part of the Master's vineyard. In

every phase of our church life we can see progress. There is a growing desire to "enlarge the place of our tent" not only materially but spiritually. The missionary spirit is alive, and plans are being made to be "up and doing." "Each one bring one" is the goal set by the members of the York church. May true consecration be seen in all the activities and then great things will be accomplished. EUNICE CUMMINS.



WELSH CONFERENCE

President: W. H. MEREDITH

Plans for Wales.

WE should be glad to have the whole WORKER family remember our work in Wales. We are passing through a serious financial situation, but we believe that "the silver and gold belong to our God," and we are going forward with courage and hope for the future. Our people here in Wales are very loyal to the truth, and we have some really earnest workers amongst our churches. Our membership is small compared with other conferences, but we have about twenty places where regular meetings are held, though some of these are very small companies.

Our staff of workers is small and this makes it difficult to render the help to all these companies that we would like to give. We believe that the Lord is able to help all those who put their trust in Him.

Our head-quarters is at present in Newport, but if all our good people could see how inconveniently we are placed, we are sure they would pity us. Both Brother Parkin and myself not only had great difficulty in securing a place at all in which to live but we are now crowded into close and extremely inconvenient quarters, and paying very excessive rent for this. Our office is in one of the small rooms at the back of the new church. This is not only inconvenient for ourselves, but also for the church. We sincerely hope that the Lord will quickly open the way for us to get better quarters.

Brother Morrison has recently commenced an effort in the city of Hereford, and on his behalf we ask the earnest interest of all the WORKER family. He has secured a fairly good attendance at three meetings, but there is no question that this, like all cathedral towns, may prove a little hard to work. Sister Cooper is connected with Brother Morrison here, and they are of good courage. We sincerely hope that they will soon establish a good-sized church in Hereford.

Brother Armstrong is still located at Cardiff and cares for that church as well as two or three other little companies near at hand. Sister Lenanton, one of our Bible-workers, is still at the sanitarium, and we are very anxious that she may soon gain sufficient strength to enable her to return to work. I am sure the friends will remember Sister Lenanton in prayer.

Sister Danbury, who was with us in the Bible work last year, because of the health of her mother, felt that she must return home to render her mother the help she ought to get, so that we have not her services this year. It will be seen by this that the staff of workers we have is quite small. I ought not, however, to forget Brother David Davies, who is looking after our colporteur work and rendering splendid service. We are hoping that our list of workers will be increased at the end of the college term, because the Union Committee has recommended to us Brother J. G. Bevan and Sister Olive Davies, and we are sincerely hoping that the Lord will bless the efforts of all our workers and churchmembers this year so that we may make really good progress. W. H. MEREDITH.

Mrs. Edmunds and family of Leigh-on-Sea wish to thank all kind friends who have sent messages of sympathy during their recent double bereavement—two deaths, those of Mr. Edmunds and the eldest son occurring in the same house within three days. We also would tender our sincere sympathy to the bereaved.—Editor.



F. A. Spearing.

South England Conference.

President: F. A. SPEARING.
Secretary and Treasurer: Miss E. M. EASTCOTT.
Field Missionary Sec'y: J. S. NEWMAN.
H.M. and Y.P. Sec'y: S. G. JOYCE.



J. S. Newman.

Southend.

THE year 1922 has closed and this seems a fitting time to express our thanks to God for His blessings and to recount some of the things He has done for us.

We have been pleased to receive visits at different times during the year from Brethren Campbell, Read, Rowe, Howard, Harker, Young and our new president, Pastor F. A. Spearing. These visits were occasions of much interest and helpfulness.



We feel very grateful for the way means have come in for our Building Fund. Some of the sisters have gathered together in two little sewing circles and as the result of their work have already contributed £7 to the fund. If the same earnest effort is continued it need not be long ere we can dismiss our Building Committee and raise a note of jubilee. Aside from this the tithes and offerings during 1922 amounted to £543. 14s. 8½d. Of this sum the Sabbath-school raised £79. 3s. 7d.

Another thing of great interest was the opening of our church school on October 9, 1922, under the care of Miss Bertha Milne. We began with only five pupils but the attendance has increased to nine and at the opening of the second term we expect a further increase.

On December 22nd we had a visit from Brother Spearing who interviewed three candidates. The writer afterward buried them in baptism to rise and walk in newness of life. These, together with another sister who was received by vote, were welcomed into the church the following day. Two others who had been baptized previously were also received.

For all these mercies we are deeply thankful and with renewed hope and courage press on.

G. W. BAILEY.



Portsmouth and the Isle of Wight.

SINCE visiting Romford and Grays in Essex, a few weeks have been spent by the writer in ministering to the believers on the Isle of Wight and at Portsmouth. With the co-operation of the members, Bible studies were arranged for at Sandown, Newport and Ventnor, and many happy hours were spent in reviewing some vital phases of present truth. It is refreshing to meet with a people who can discern the signs of the times, and who are living up to their convictions of



truth and duty so that they may be ready when their Lord returns.

The writer was much impressed by the earnestness with which some of the members on the island engaged in the Harvest Ingathering Campaign. One sister, connected with the Newport company, went out to collect though she had to make use of a crutch in order to get about. A brother residing at the same place succeeded in collecting £15 or more, although not enjoying the best of health. May the Lord bless these earnest workers, and may it be their joy at last to hear from the lips of the Master the words of commendation, "Well done, thou good and faithful servant, thou hast been faithful in few things, I will make thee ruler over many things; enter thou into the joy of thy Lord." Such faithfulness under phy-

sical affliction is truly a rebuke to those who are in possession of all their faculties and yet do nothing to advance the cause they profess to love.



J. B. WEST.

Good News from Wimbledon.



WE are very glad to be able to bring to the readers of the MISSIONARY WORKER the news of the splendid success which attended the first meeting of the Wimbledon effort. The meetings are being held in the Elite Picture Palace, which has a seating capacity of 1,037. The first meeting was held last Sunday, January 28th, and 900 people were present. It was quite evident that many people were anxious to be present, for half an hour before the meeting commenced there was a long queue of people awaiting admittance. Pastor Maudsley gave a striking and vigorous address on "The World's Mad Gallop." All present appeared to be deeply interested as he portrayed the present conditions in the world and compared them with conditions which the Bible shows will mark the last days.

The interest may be seen from the fact that 136 persons left their names for literature, and the entire audience remained after the service to hear Pastor Maudsley answer the written questions sent to him after his sermon. The collection amounted to £6. 15s. 6d.

We feel that God has richly blessed the efforts put forth in preparation for these meetings, and we are confident He will continue to bless us and be with us to the end. We look forward to the time when there will be a strong church in Wimbledon to witness for God as a result of this effort. We ask our brethren and sisters throughout the Union to unite with us as we pray to the Lord of the harvest for success.

M. V. CAMPBELL.



"Every Day, In Every Way, We're——"

IN spite of the fact that we are working in territory more than sixty per cent of which was billed for the Walthamstow campaign, among people who know through the agency of their local newspaper that Pastor Barras is the minister of the newly-dedicated Walthamstow S.D.A. church—the interests of our work here in Leyton are getting "better and better."

On Sunday, Jan. 21st, over 600 people were present, an increase of more than 100 over the opening night. The following Sunday evening the hall and balcony, which were seated for nearly 800, were almost filled. It is possible that we might have packed the hall on the first night had we advertised more extensively, but we prefer to husband our resources. Already we have reduced the number of our posters and handbills.

A remarkably high spiritual tone has been manifested during each meeting. As the Bible-workers visit the 250 people who have handed in their names for tracts, they are received by warm-hearted, interested, truth-seeking men and women.

We expect difficulties in the Lord's work as we near the end, but we are of good courage for we know God is with us.

Pray for the work here. Success depends not upon might, nor upon power, but upon God's Spirit. ALFRED F. BIRD.

P.S.—The Rev. David Hunter, M.A., minister of the Leytonstone Fellowship Church, one of the champions of the hunger marchers, has attended each meeting and says he is coming right along.

Statement of Tithes and Offerings for the British Union Conference for Quarter Ending Dec. 31, 1922.

NAME OF CHURCH OR COMP'Y	MEM-BER-SHIP	TITHE	Tithe per Capita	TOTAL OFFERINGS	Offer-ings per Capita
North England Conference					
Anon		90 0 0		2 16 0	
Birmingham (Bearwood)	35	24 0 9	15 0	28 17 7	18 0
(Handsw'h)	51	89 4 5	1 13 8	94 5 11	1 15 7
(South)	24	24 19 0	1 9 0	28 0 8	1 0 8
Bradford	19	16 9 0	17 4	19 12 4	1 0 8
Coventry	44	52 11 10	1 7 0	78 15 3	2 0 5
Derby	56	85 4 0	1 8 11	57 4 11	19 5
Grimsby	20	19 2 7	14 9	37 1 4	1 8 6
Hull	133	162 14 7	1 8 7	181 14 9	1 11 11
Kettering	32	41 13 2	1 4 6	53 18 11	1 11 7
Leeds	60	94 1 2	2 3 9	69 8 6	1 7 8
Liverpool	40	51 12 4	1 8 8	62 19 7	1 15 0
Liverpool	48	43 17 8	18 8	105 16 8	2 5 0
Manchester (North)	38	58 10 1	1 8 6	74 11 8	1 16 5
(South)	73	96 17 8	1 3 11	84 0 1	1 0 9
Newcastle-on-Tyne	59	97 8 3	1 18 2	96 1 2	1 17 8
Nottingham	97	127 11 3	1 7 5	168 16 10	1 16 4
Rotherham	16	23 10 10	1 9 5	36 11 4	2 5 9
Rushden	14	20 12 6	1 7 6	52 10 2	3 10 0
Sheffield	60	61 12 2	19 10	68 12 6	1 2 2
Stoke	31	22 5 11	17 10	90 5 3	3 12 3
Waterloo	9	51 11 9	5 14 8	73 9 4	8 3 3
Wellingborough	20	17 0 5	18 11	34 3 1	1 17 11
Wigan	9	6 9 9	11 10	23 10 9	2 2 10
Wolverhampton	23	26 18 7	1 5 8	23 14 6	1 2 0
Worcester	56	73 19 0	1 5 6	139 11 4	2 8 1
York	42	42 11 4	1 0 3	133 16 5	3 6 1
Conference					
Blackburn	10	5 7 0	13 5	11 2 6	1 7 10
Burnley	12	6 4 6	9 7	7 12 7	11 9
Lang ey	23	29 18 5	1 8 6	20 14 4	19 9
Lincoln	11	13 18 4	1 3 2	21 3 3	1 15 3
Mansfield	23	20 13 0	17 0	32 16 8	1 8 7
Melton Mowbray	6	8 0 6	2 13 6	21 14 6	7 4 10
Middlesborough	10	12 17 10	1 8 8	59 15 10	6 12 10
Northampton	8	6 8 6	8 7	14 16 8	19 9
Scarborough	9	25 15 4	2 17 3	51 11 6	5 14 7
Seacombe	8	10 8 0	1 6 0	20 9 5	2 11 2
Southport	11	5 9 6	5 10	6 1 9	7 7
Sutton-in-Ashfield	11	11 0 2	18 4	33 19 4	2 16 7
Ulverston	15	17 0 11	1 14 1	38 16 0	3 17 7
Isolated	100	206 6 0	2 15 11	321 3 5	4 6 10
+Handsworth Convention					
Totals for 4th Quarter, 1922	1366	1901 18 0	1 9 4	2576 7 11	1 19 8
Increase.					
South England Conference					
Bath	39	32 19 4	16 11	76 17 2	1 19 5
Battersea	13	18 19 8	1 13 2	28 9 10	2 3 10
Bournemouth	43	76 4 3	1 15 5	72 18 0	1 13 11
Brighton	35	43 15 11	1 5 0	39 10 4	1 2 7
Bristol	75	123 13 10	1 13 0	178 14 11	2 7 7
Brixton	51	55 5 6	1 5 7	89 14 0	1 15 2
Catford	27	31 17 3	1 5 10	63 9 2	2 7 0
Croscombe	14	28 9 2	2 0 8	41 9 8	2 19 3
Edmonton	22	24 10 6	1 2 3	33 18 9	1 10 10
Exeter	8	2 3 0	5 4	3 6 0	8 3
Forest Gate	23	21 19 1	19 1	40 6 7	1 15 1
Forest Hill	22	61 10 9	2 15 11	21 4 10	19 3
Hillingham	13	30 3 6	2 6 5	105 3 6	8 1 10
Hastings	28	37 1 5	1 6 6	73 0 9	2 12 2
Kingston	19	17 5 3	18 2	22 0 10	1 3 2
London North	120	283 13 0	2 7 3	293 7 8	2 8 11
London N.W.	35	54 16 0	1 11 4	105 0 10	3 0 0
London West	56	149 7 3	2 13 4	117 12 11	2 2 0
Luton	32	25 1 4	15 8	51 13 8	1 12 3
Plymouth	73	140 9 5	1 13 6	168 16 11	2 6 3
Portsmouth	46	48 3 5	1 0 11	77 16 6	1 13 10
Reading	5	6 13 6	1 6 8	12 2 2	2 8 5
Stopley	10	11 5 6	1 2 6	45 4 10	4 10 6
Southampton	50	51 3 11	1 0 6	79 6 3	1 11 8
Southend	64	96 19 1	1 10 3	137 1 9	2 2 10
Stanbro' Park	178	391 16 4	2 4 0	483 19 0	2 14 4
Vallington	21	85 6 5	4 1 3	48 10 11	2 6 3
Valthamstow	69	110 5 8	1 11 11	258 11 6	3 14 11
Watford	98	213 3 11	2 3 6	245 6 4	2 10 1
Cambridge	26	26 17 2	1 0 8	99 18 10	3 16 10
Dorchester	7	17 16 7	2 10 11	58 10 0	8 7 2
Totals for 4th Quarter, 1922					
Increase.					
S. England Con. (Continued)					
Dereham E	13	4 16 0	7 4	28 4 0	2 3 4
Ely	4	11 5 7	2 16 5	19 14 1	4 18 6
Harrow	10	8 7 3	16 8	22 5 1	2 4 6
Hessenford	6	14 19 0	2 9 10	17 15 6	2 19 3
Newport, Isle of W.	6	12 1 0	2 0 2	40 17 6	6 16 3
Romford	11	24 11 6	2 4 8	49 16 2	4 10 6
St. Mabyn	5	17 17 0	3 11 5	34 5 0	6 17 0
Salisbury	3	3 4 11	1 1 8	21 8 0	7 2 8
Sittingbourne	4	11 11 0	2 17 9	6 4 6	1 11 1
Torquay	5	19 7 0	3 17 5	20 5 0	4 1 0
Ventnor	8	14 6 2	1 15 9	40 9 2	5 1 2
Walmer	7	4 1 8	11 8	16 12 8	2 7 6
Isolated	4	14 13 1	3 13 3	25 4 0	6 6 0
Miscellaneous	127	209 3 11	1 12 11	178 4 11	
Totals for 4th Quarter, 1922	1585	2703 6 3	1 15 2	3861 15 7	2 10 4
Totals for 4th Quarter, 1921		2571 19 8	1 13 9	4130 7 1	2 14 4
Increase.		131 6 7	1 5	*268 11 6	*4 0
Welsh Conference					
Blaenavon	10	18 0 10	1 10 5	11 13 7	19 6
Cardiff	44	89 8 0	2 2 4	99 2 5	2 7 3
Ebbw Vale	17	12 4 2	15 3	16 19 11	1 1 3
Mountain Ash	15	10 8 2	14 10	39 5 2	2 16 1
Newport	74	112 19 1	1 17 0	97 17 7	1 12 5
Pembroke Dock	17	39 12 3	2 9 6	37 16 8	2 7 3
Pontypridd	15	17 3 0	18 1	39 12 2	1 11 2
Porth	28	27 2 3	1 2 7	39 3 6	1 12 8
Swansea	33	29 10 10	18 6	96 10 3	3 0 4
Conference					
Aberdare	16	24 6 4	1 17 5	85 1 4	6 10 10
Bargoed	20	15 10 2	1 2 2	10 8 4	14 10
Caerphilly	12	8 9 8	15 5	11 0 10	18 5
Dowlais	3	4 17 6	1 12 6	13 6 6	4 8 10
Hereford	7	6 11 0	14 7	17 1 10	1 18 0
Rhos	11	7 5 6	14 6	29 10 4	2 19 0
Shrewsbury	6	8 6	1 5	1 19 8	6 8
Wattsville	8	12 1 4	1 10 2	18 1 6	2 5 2
Wellington	12	3 1 2	5 1	10 14 5	17 10
Isolated	33	62 11 9	1 17 11	94 13 8	2 17 5
Totals for 4th Quarter, 1922	381	501 11 5	1 8 3	759 19 9	2 2 10
Totals for 4th Quarter, 1921	355	535 4 10	1 10 2	711 18 2	2 0 1
Increase.	26	*33 13 5	*1 11	48 1 7	2 9
Scottish Conference					
Edinburgh	57	37 13 10	13 2	134 11 3	2 7 2
Glasgow	37	23 2 2	12 6	119 19 10	3 4 10
Paisley	5	9 3 0	1 16 7	39 9 2	7 17 10
Kirkcaldy	16	23 11 2	1 9 5	25 14 11	1 12 2
Stirling	8	20 18 4	2 12 3	29 8 8	3 19 7
Partick	17	8 17 6	10 5	22 11 11	1 6 7
Clydebank	9	6 6 9	14 1	12 6 8	1 7 5
Dundee	7	8 3 0	1 3 3	32 0 6	4 11 6
Conference	47	85 13 9	1 16 5	133 16 10	2 16 1
Totals for 4th Quarter, 1922	203	223 9 6	1 2 0	549 19 9	2 14 2
Totals for 4th Quarter, 1921					
Irish Mission					
Belfast	78	66 17 10	17 2	138 3 9	1 15 4
Dublin	39	43 3 7	1 2 2	111 14 4	2 17 4
Banbridge	7	9 3 9	1 6 1	23 2 3	3 6 0
Magherafelt	7	10 5 0	1 9 3	8 0 0	1 2 10
Kilmoyle	11	3 19 6	7 3	4 15 0	8 8
Mission	45	111 7 8	2 9 6	91 19 0	2 0 6
Totals for 4th Quarter, 1922	187	244 17 4	1 6 3	377 14 4	2 0 4
Totals for 4th Quarter, 1921	200	209 13 0	1 1 0	338 8 10	1 1 10
Increase.	*13	35 4 4	5 3	39 5 6	6 6
Grand Totals, 4th Q'r, 1922	3672	5575 2 6	1 10 4	8159 19 11	2 4 5
Grand Totals, 4th Q'r, 1921	3622	5664 10 1	1 11 3	8568 8 6	2 7 3
Increase.	50	*89 7 7	*11	*408 8 7	*2 10

*Decrease.

REMOVALS by motor lorry, distance no object. Wholesale English and foreign fruiterer. A. Gowlett, 4 Aldenham Road, Bushey, Herts.

WANTED.—Gook-general with first-rate references. Two in family, housemaid daily mornings, small house (Chesham Bois, Bucks.), high wages, Sabbath kept. Apply to Mrs. B. M. Keen, Northcott, Chesham Bois, Bucks.

WANTED.—By S.D.A. situation as woodworking machinist, used to planing and moulding machines, also band and circular sawing, etc. Distance no object. Address: W. H. Bailey, 93 Basford Road, Basford Park, Stoke-on-Trent, Staffs.

ORDERS wanted for egg stands, toy Noah's arks, animals, racks, money boxes, small medicine chests, newspaper racks, toy boxes, handkerchief boxes, cruet stands, collar boxes, needle-work boxes, wall mottoes, etc. Excellent for birthday presents, estimates given. Address all orders to C. Harcourt, 160 Woodwards Grove, Shirley, Southampton.

WANTED.—Situation as housemaid or help where Sabbath can be kept. Apply: Miss B. Francis, 31a Penwith Road, Garret Lane, Earlsfield, S.W.

WANTED.—Several energetic young men to take up the sale (from door to door) in Northamptonshire, of a splendid selling line for which we have sole agency. In great demand, good profit, no outlay, constant work. For further particulars apply to Porch, Health Food Stores, Princes Street, Kettering.

WANTED.—By young man, age 25, situation where Sabbath can be kept. Apply in first instance to N. S. Hall, 64 Brereton Avenue, Grimsby.

ADVENTISTS! No injurious objectionable animal fats in Anagreen Ointment, 1/3 per tin, post free, worth many times the cost. Send now and be prepared to heal all cuts, wounds, ulcers, burns, sprains, etc. Anagreen is a superior herbal ointment carefully prepared from Nature's own fields by H. R. Cleverly, 57a Swaffield Road, Wandsworth, S.W.18.

Three Hundred Colporteurs Wanted!

January 22, 1923.

To the conference presidents, field missionary secretaries, and other conference labourers,

Greeting:

"ONE HUNDRED AND FIFTY PERMANENT COLPORTEURS IN 1923."

I am calling your attention to the above goal that I believe is within our reach and should be attained this year.

I have been investigating the situation very carefully, comparing our field with other unions in the European Division. The records of the past three months reveal the fact that in the Latin Union there are eighty-two colporteurs in the field. The Central European Conference reports one hundred and thirty-two colporteurs; the East German Union one hundred and eighty; the West German Union one hundred and eighty-nine colporteurs; while the Scandinavian Union with a population of about 20,000,000 has in the field two hundred and fifteen colporteurs. The British Union, with a population larger than any of these fields, with the exception of the Latin Union, has only seventy colporteurs regularly reporting.

Now the reason I am bringing these comparisons to your attention is because I know they will serve as a mighty impetus to spur us on to greater endeavour in the way of greatly increasing the number of regular colporteurs we now have in the field.

SOUL-WINNING.

Perhaps you have wondered how nearly 9,000 precious souls have been reached in the Scandinavian Union and 30,000 souls in Germany. You ask our people residing in those countries how these achievements have been brought about and they will tell you it has been done *very largely* through our literature.

Now we are going to begin at once to do the same things right here in the British Union, and we are counting on every one of you men who hold responsible situations among our people to help us to put eighty more permanent colporteurs in the field. We know you all believe that this thing should be done and we believe you are all going to help us do it as soon as you can present the plan to your churchmembers.

THE CITIES.

As we have fully decided to make the cities one of our chief objects of attack this year by encouraging our most efficient workers to enter into these practically unworked centres of population, and further as the price of "Daniel and the Revelation" has been greatly reduced as a special inducement to our workers to handle the large books in our cities, it does seem as though immediate and specific steps should be taken to procure this army of new colporteurs to sell this splendid message-filled book.

300 COLPORTEURS.

Three hundred colporteurs should work in this union the year round without any danger of exhausting the territory. Then there would be plenty of room left for more workers.

Will our ministers send the names of those whom they feel should engage in this work to their field missionary secretary? We want the names of eighty candidates for the colporteur field.

Yours for service,

E. M. FISHELL.

A Swiss brother, speaking French, age 30 years, strong, serious and diligent, seeks situation with Adventists. Main object to learn English. If necessary would do work on land, having much experience in agricultural work. Apply in first instance to J. H. Weidner, Châlet Rose, Bex, Switzerland.

WHEN in London stay at "Restholme," 31 Lorne Road, Finsbury Park, N.4. Mrs. Thicke is desirous of taking in paying guests as at Brighton.

FOOD specialities, etc., any assortment 10/- value, carriage paid. Cooking fat, 9½d. per lb.; Malt, 1/2d.; Honey, 9d.; Syrup, 6d. and 7½d.; choice apricot jam, 9d.; raspberry, 11d.; Welch's grape juice, 3/3; Malt and olive oil, 6d., 11d., and 1/8; Nut mills, 2/- Goodall's, Taunton Road, Birmingham.

SEND your watch for reliable repairs to A. E. Palmer, 152 St. Albans Avenue, Bedford Park, London, W.4. Jobs returned registered and post free.

HEALTH FOODS AND GROCERIES.—Why not deal from Sabbath-keepers? Free delivery in North London, Walthamstow, and Edmonton. Price list on application. Customers urgently needed. Walter Bernhardt, Health Food Stores, Crouch End.

WANTED.—A good painter and glazier, S.D.A. State wages required. Address A. J. Rogers, 11 Queen Street, Caebryn, Brynmenyn.

Canvassers' Book Report for Dec., 1922.

Name.	Territory	Book.	Hrs.	Total value.
Nth. England Con				
Belton, B.....	Conisborough	O.P.H.	122	33 3 2
Billard, B.....	Woodford	O.D.	126	6 13 9
Bolam, P.....	Consett.....	O.P.H.	109	20 12 6
Bolam, Mrs.....	"	"	54	7 6 4
Bolam, J. R. W.....	"	"	75	11 5 7
Davies, B. H. C.....	Bradford	S. to C.	54	10 15 0
Davies, Miss C.....	Birmingham.....	"	64	2 12 4
Deacon, A.....	Lincoln	"	59	6 7 7
Gallaher, J. C.....	Newcastle	D. & R.	127	19 1 0
Gallaher, A. H.....	"	S. to C.	76	4 14 6
Glenister, A. G.....	Leicester.....	"	23	2 1 0
Greenhow, J. H.....	Blackburn.....	O.P.H.	116	24 7 1
Gregory, W. E.....	Lincoln	R.A.	70	11 11 0
Griffith, G. W.....	Birmingham.....	D. & R.	96	17 12 5
Halstead, E.....	Oldham.....	"	28	9 13 7
Hamblin, G. W.....	Leicester.....	O.D.	27	3 4 6
Himsworth, Miss	Manchester	S. to C.	2	5 0
Hilton, W.....	Hexham	D. & R.	50	11 8 7
Hulbert, A. E.....	Rothbury.....	"	32	13 6 6
Jackson, W.....	Sheffield.....	O.D.	50	8 13 0
Laming, W. E.....	"	S. to C.	159	32 2 10
Leck, Miss.....	Blaydon.....	O.D.	59	2 13 6
Morley, S.....	Newton.....	D. & R.	71	30 1 0
Pollard, J. H.....	Ilkeston.....	S. to C.	30	6 0 6
Rowland, W.....	Rotherham	O.P.H.	109	23 1 0
Rutherford, Mrs. J.....	Sunderland.....	S. to C.	181	14 16 2
Shawcross, H.....	Coventry.....	"	10	3 8 0
Thorpe, Mrs.....	Todmorden	O.D.	14	2 6 6
Young, E. J.....	Oldbury.....	S. to C.	109	7 12 2
No. Agents, 29.			Total.	1992
				346 15 1
Sth. England Con				
Ashbee, Miss I.....	Dorchester.....	O.D.	71	4 9 0
Benefield, J.....	Walton-on-Naze ..	"	70	17 4 6
Buxall, H. W.....	"	"	87	8 19 6
Butler, Miss N.....	Caterham.....	D. & R.	76	9 17 6
Casey, Mrs.....	Hertford	S. to C.	40	8 13 0
Cameron, Miss H.....	Colchester	O.D.	63	4 13 6
Chappell, Mrs. (Sen'r)	Bristol.....	S. to C.	76	11 2 4
Combridge, S.....	Hampstead.....	O.D.	104	25 9 3
Cleverley, H. R.....	Earlsfield	"	4	5 0
Hardy, J.....	Yatton.....	O.D.	110	29 1 0
Harris, Miss.....	Horsham	S. to C.	110	10 6 0
Hellyer, W. H.....	Croscombe	"	81	4 15 0
Johnson, A. C.....	Torquay	"	10	1 2 0
Johnson, Mrs.....	"	"	26	4 5 8
Kirby, W. J.....	Willesden.....	R.A.	16	3 15 0
Nickels, G. D.....	Wisbech	D. & R.	18	10 5 0
Pearce, G.....	Walthamstow	S. to C.	120	22 13 0
Sully, Mrs.....	Salisbury	O.D.	127	16 10 4
Talley, Miss F.....	St. Austell.....	"	74	10 0 10
Troke, A. H.....	Harrow	"	107	7 11 6
Winkworth, A. E.....	Ashford	"	66	20 5 6
Weston, Miss N.....	High Wycombe....	S. to C.	16	2 2 6
Toogood, C.....	Plymouth.....	"	22	2 10 0
Toogood, Mrs.....	"	"	22	3 7 0
Toogood, H.....	Hor. ham.....	"	88	9 16 0
No. of Agents, 25.			Total.	1582
				248 19 11
Scottish Con.				
Baird, J.....	Kincairdine.....	D. & R.	18	17 6
Broadfoot, A.....	Cowdenbeath.....	O.D.	119	15 0 0
Howard, H. D.....	Banffshire.....	D. & R.	49	22 7 6
Howie, J.....	Kincairdine.....	"	15	1 15 0
Middlemiss, B.....	Perthshire.....	S. to C.	6	2 5 0
Morrison, W.....	Wigtownshire.....	O.D.	82	6 19 0
Miscellaneous.. ..	"	"		2 2 0
No. of Agents, 6.			Total.	189
				51 6 0
Welsh Con.				
Bevan, S.....	Pwllheli.....	O.D.	56	15 4 6
Brooks, R.....	Govilon.....	"	21	6 3 0
Evans, G.....	Newcastle Emlyn ..	"	152	25 15 9
Fisher, A.....	Abersychan.....	"	67	13 17 6
Howell, H. J.....	Llanturt Major....	"	97	9 10 4
Jennings, S.....	Dowlais	S. to C.	8	2 1 0
Morris, W.....	Aberdare.....	O.D.	39	4 9 0
Owen, J.....	Cwmaman.....	"	80	10 12 1
Price, W.....	Aberdare.....	"	9	12 4
Rees, J.....	Crynant.....	"	36	10 2 0
Yates, I. H.....	Tredegarr.....	"	36	5 12 0
No. Agents, 11.			Total.	601
				103 19 6
Irish Mission.				
Whiteside, J. R.....	Co. Down.....	O.D.	35	11 17 6
Grand Totals, 71.			4399	762 18 0

THE EDITOR'S PAGE.

SHORTEST POSTAL ADDRESS:

(The MISSIONARY WORKER is printed and published fortnightly by The Stanborough Press, Ltd., Watford)

Editor: A. S. MAXWELL.

The Editor, Stanborough Press, Watford

Assistant: MISS M. STOCKFORD

Vol. 28. No. 3.

Copy for the next issue must reach us
not later than Thursday, February 15th.

February 9, 1923

BOIL IT DOWN!

Our little sheet is small,
We cannot publish all—
Two quarts in one, oh, no;
You cannot make it so.

So, this is our advice,
And we repeat it thrice:
Boil it down, boil it down,
Yes, boil it down.

A long report may wait,
But this will make it late.
"Then use your shears," you say,
"And clip some things away."

But this we hate to do
With friends so good and true.
Why not boil it down?
You boil it down.

We want to hear from you.
And very often, too—
Not one great, long report.
But many good and short.
So this is our advice,
Again we say it thrice:
Boil it down, boil it down,
Please boil it down.—*Sel.*

YET once more we have been compelled to hold over a large quantity of valuable copy. Hence our publication of the above poem. Will all contributors please take it to heart?

By the time these lines are read the annual "February meetings" of the British Union Conference Committee will have closed. Any important changes of workers or policy will be announced in the next issue.

PASTOR MAUDSLEY commenced his effort in Wimbledon Sunday evening, Jan. 28th, and had nearly 900 in attendance. A full report of this splendid opening will be found elsewhere in this issue.

WE are glad to learn that the attendance at Pastor Barras's effort was even larger on the third Sunday than on the first. See report inside.

FROM the reports that have reached us, some of which appear in this issue, we compute that there were well over 3,000 people listening to the message in various parts of the kingdom last Sunday. Let everybody pray that this effort may be rewarded with an abundant harvest of souls before the year closes.

WE are glad to be able to report that in the little affair in which we are personally concerned in the Watford Town Church—a purely local Home Missionary enterprise—good results have accrued so far. There were nearly 150 people at the meeting in the church on Sunday, Jan. 28th.

BRETHREN W. E. READ and L. H. Christian left Berne last week to visit various mission stations in Africa. We understand that Brother Christian will proceed to the East Coast to meet Brother Bartlett. They will be away several weeks.

NOT long ago we published an appeal for funds for a church in Edinburgh, to which all those interested in Scotland have doubtless by now responded. Now comes another appeal for a church building for Nottingham. Judging by the report in this issue the church has demonstrated, by raising £500, that it thoroughly deserves a building and—assistance. Friends of Nottingham—do your duty!

BROTHER BARTLETT has written over requesting more Sabbath-school picture rolls. If there is one to spare in your church please send it to Brother N. H. Knight at the Stanborough Press, Ltd., Watford, who will see that it is included in the next shipment of goods to Gendia.

WE would call special attention to Pastor A. E. Bacon's article in this issue on the unentered towns of the North England Conference. It is one that should be pondered by all. How long are we going to leave all these populous cities unwarned?

FROM a personal letter from Pastor S. Joyce we glean the following interesting items concerning the work in Dublin: "The conditions do not improve over here. There were four ambushes in Dublin yesterday. Twice since Christmas when returning from our Tuesday evening prayer meeting I have seen people run for cover. Last Tuesday evening I saw two National soldiers carrying one of their companions between them to hospital while the firing was in progress. But God is good to His people here; not one of them has been interfered with in any way.

"You will be interested to learn that our tithe receipts showed a slight gain last year over 1921 and our offerings were almost £50 ahead of those for the previous year. Here are the figures for 1921 and 1922, also those for the five-year periods 1913--1917 and 1918--1922.

	Tithes	Offerings	Total
1921	103 7 5½	108 4 6½	211 12 0
1922	105 18 11½	156 18 3	262 17 3
Gain for year	2 11 6	48 13 8½	51 5 3
1913--1917	171 11 5	62 2 5½	233 13 10
1918--1922	497 6 7½	435 16 1	933 2 9
Gain for 5 years	325 15 2½	373 13 7½	699 8 10

"There have been twenty additions since 1918, but unfortunately seven have died and nine have removed, so we are very little stronger numerically. However, we are all of good courage in the Lord and feel very grateful for His care over us and for the amount of success He has been pleased to grant. We trust it may please Him to so bless us as a church that He can add largely to our numbers during 1923 'such as should be saved.'"

THE members of the Exeter church pass on the good news that one more member—an old lady of 81—has been added to their little company. Previous to Brother Cooper's departure from Torquay the members from Exeter went over and witnessed the baptism of their new believer. We are sure all will rejoice with them.

Sister Byrt, writing on behalf of the church, expresses great appreciation of the welcome visits of Brother Hellyer and tells of their rejoicing at the prospect of a monthly visit from Brother Johnson and the privilege once a quarter of having Brother J. Hyde from Plymouth minister to them.

WANTED.—Situation as useful help by middle-aged Sabbath-keeper. Write M., c/o E. Elliott, 55 Bedford Hill, S.W.12.

FOR SALE.—A "Daniel and the Revelation" prospectus (blank order forms taken out, some forms left with customers' names on), price 3/9, carriage paid. Apply: W. M. Green, 11 St. Gabriels Road, Easton, Bristol.

SUNSET CALENDAR.

	LONDON	CARDIFF	EDINBURGH
February 9th	5.2	5.15	5.0
February 16th	5.15	5.27	5.15