

# The MISSIONARY WORKER

ORGAN OF THE  
BRITISH UNION CONFERENCE  
OF  
SEVENTH-DAY ADVENTISTS.

## Southampton Church Jubilee

Fifty Years of Advent History in This Great Seaport

By H. G. BUCKLE

DURING the year 1878, the first effort was made to introduce the third angel's message into England. Brother William Ings, a native of Hampshire, commenced the work in Southampton by distributing literature from house to house, and a few commenced to observe the seventh-day Sabbath.

In January, 1879, Elder J. N. Loughborough was sent by the General Conference to follow up the work. He gave a series of discourses in the Shirley village hall, held Bible studies at his residence, and later held a tent effort in Freemantle, thus gaining new friends for the cause. When the tent was taken down, Sabbath and Sunday services were held at "Ravenswood," Shirley Road, until 1883. During this time, Sister E. G. White visited the church.

In January, 1880, the believers agreed to sign a covenant to "keep the commandments of God and the faith of Jesus," which covenant was understood to include the observance of Saturday as the Sabbath of the Lord. Up to September, 1883, sixty-five names were attached to this covenant.

During the month of February, 1880, a baptismal font was constructed at "Ravenswood," and on February 8th the first baptism, the jubilee of which we are celebrating, was conducted. Sister Mary Ann Warné and a number of others were baptized. Later in the year a tent effort

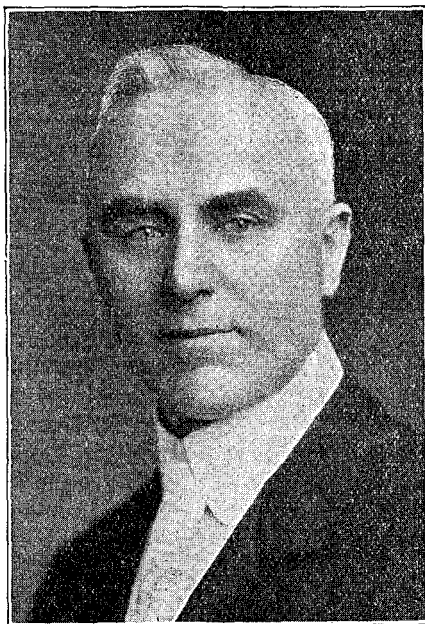
was held in Romsey by Elder Loughborough, assisted by Brother Ings, and at least one commenced to observe the Sabbath.

Up to August, 1883, thirty-seven persons were baptized in the font, which was afterwards removed to Great Grimsby. On Sabbath, September 1st, the believers were organized into a church of nineteen members, the first church of Seventh-Day Adventists organized in Great Britain. Following this, the headquarters of the church were transferred to 239 Shirley Road.

On Sabbath, October 6, 1883, Elder and Mrs. Loughborough and their daughter May bade farewell to the church, before leaving for Battle Creek, Michigan, U.S.A. Elder J. H. Durland and his wife, who had come from Iowa to take charge of the work, were received into fellowship, as were also Brother John Warne and others. Brother and Sister Warne laboured faithfully for many years in the distribution of literature.

On June 15, 1884, Brother and Sister C. Hailey were received into fellowship, and the following year they took the house at 120 Shirley Road and let one of the rooms for the use of the church.

On January 2, 1887, as Elder J. H. Durland was removing to Kettering, it was decided to carry on with local help, but during 1889 and 1890 the church received helpful visits from Elders D. A. Robinson and W. A. Spicer. From



*Pastor F. W. Johnston, of Canada, who has united with the evangelistic force in the North England Conference.*

May 27th to June 11th Brother Rout, from New Zealand, conducted a series of revival services, during which seven others signed the covenant. Elder D. A. Robinson and Dr. E. J. Waggoner acted as church elders for a time. Brother Champness also conducted special services. About this time the place of meeting was transferred from Brother Adams' house to Brother Rout's, and again for a time to the original location at "Ravenswood."

In September, 1893, Elder J. S. Washburn and family came from Bath to conduct an effort in Southampton, assisted by Elder Francis Hope, and later by Elder H. R. Hanson. In October, meetings were commenced in the Victoria Rooms, which were quite extensively advertised, some very striking posters being used, which resulted in a large attendance. Reports, sometimes covering entire pages, appeared in the newspapers. Four meetings were held on Sundays, the last one being illustrated by stereopticon slides. The attendance became so large that the Philharmonic Hall had to be engaged, instead of, and later in addition to, the Victoria Rooms. But finally the latter had to be abandoned, because it was impossible to control the crowds who tried to gain admittance. Southampton was thoroughly stirred by the message, and by the time Elder Washburn left for Kettering, the church membership had increased to 120. During his stay, on September 28, 1895, the Shirley Academy, in which the services are still conducted, was purchased for the sum of £865, and Brother Hailey redecorated it and built a baptistery.

In 1897 Brother and Sister Ritchie Leask from South Hackney made Southampton their field of labour, and in 1899 Brother and Sister Fitzgerald introduced the light on health reform. Shortly after, cottage meetings were started at Romsey, Hythe, Woolston, and Cowes.

In January, 1902, Elder Ballenger held a special holiness mission, and a large number were baptized on February 2nd. About this time Brother Leask left the truth, and Brother Champness gave addresses to those who were coming under his influence.

During 1905 a tent effort was held at Eastleigh by Brethren Shafer and Carscallen, and a few were added. In November, 1905, Brother and Sister Gaunterau came to Southampton. On November 3rd, the first Sabbath-school convention was held, several interesting papers being read by members. Later, Elder J. J. Nethery took the oversight of the work, and in 1910 conducted two baptismal services. In October, 1911, he left for Birmingham, and Brother and Sister G. W. Bailey remained until 1913, when they left for Newport, Isle of Wight. During that year, Brother Richmond, Brother John Warne, and

Brother Charles Hailey fell asleep in Jesus.

In January, 1915, Pastor and Mrs. F. A. Spearing took charge of the work for a year. Brother Spearing, assisted by Brother A. S. Maxwell and Sister C. Thicke, conducted a tent effort in the Polygon, in which their goal of 20 souls was realized.

Early in 1916 Pastor and Mrs. Spearing were transferred to East Dulwich, and Pastor J. B. West took his place until 1918. As the World War was then in progress the attendance was increased by brethren in the army who were stationed at Winchester. On July 13, 1916, another Sabbath-school convention was held in which several leading brethren took part. Sister Hailey fell asleep on April 22, 1917, and her daughter, Sister Lily Hailey, is now the oldest surviving member.

The South England Conference session was held at Southampton from September 5 to 10, 1917, when visitors were present from all parts. At that time the South England Conference offices were transferred to Southampton, and the president, Pastor S. G. Haughey, and Sister Haughey took up their residence there. Brother H. W. Lowe assisted them as secretary-treasurer. In 1919 Brother Lowe conducted some special Sunday services, afterwards leaving for West Africa. In 1920 Brother Roy Warland joined the forces, but both he and Pastor and Mrs. Haughey left in 1921. On September 7, 1922, the church mourned the loss of dear Sister Warne, who had been connected with the church from the very first, for 42 years.

Towards the close of 1922, Brother Maynard Campbell spent two months with the church, and in 1923 Brother G. W. Bailey and Brother R. Borrowdale were asked to locate there.

On March 19, 1925, Pastor and Mrs. F. S. Jackson were transferred to the church from Ireland. He was assisted by Sister Ivy Baldwin as Bible worker, and during his ministry some twenty members were added to the church. During this time many improvements were made, and electric lighting and heating were installed. One sister donated a beautiful anthracite stove to help with the heating.

Pastor Jackson was succeeded in 1927 by Pastor R. Mussen, who laboured until nearly the close of 1929. During his stay a revival has taken place in the various interests of the church. One feature that enables the church to sing its song of jubilee is the generosity of the British Union Conference in freeing the church from its debt on the church building.

Pastor Spearing has now returned to Southampton in order to recover his health and we hope and pray that he will be restored speedily, so that he may again labour in our midst.

## North England Conference

Office Address: 22 Zulla Road, Magdala Road, Nottingham.

President: Pastor W. T. Bartlett.  
H.M., S.S., and M.V. Sec.: J. Howard.

Sec.-Treasurer: J. H. Parkin.  
F.M. Sec.: G. Bell.

### Notes from the President

GOOD reports from the South Birmingham and Grimsby efforts are coming in, and we trust that before long definite fruit will be seen.

OUR new evangelist from Canada, Brother F. W. Johnston, is located in Bolton, and hopes to commence operations there during the month of February. We ask the prayers of all that in his first effort in our field Brother Johnston may be richly blessed and prospered. He has now been in evangelistic work for about a quarter of a century. From the very beginning his labours bore fruit, and every succeeding year he has rejoiced in seeing more souls won than during the previous year. As a result of his latest city effort in America, 160 people were baptized. The conditions, of course, are different on this side of the Atlantic, and Brother Johnston may meet with difficulties here of a new type. but we are confident that he will attack any new problems with courage and faith in God. Efforts on such a scale as he has grown familiar with, of course, demand cordial backing on the part of the churchmembers living in the vicinity, and we are expecting that Brother Johnston will receive this from the brethren and sisters in Manchester and other adjacent parts.

WE are happy to report that funds are coming in already toward the North England Tent project. With the initial gift we have now £15 15s.-9d. If we could have three tents out in the field this coming summer, it might mean, with God's blessing, the raising up of three new churches.

IT has been decided, provided a suitable hall can be found, to hold the North England Conference session in Leeds at the time of the August bank holiday.

DESPITE the pouring rain, Brother Ward had an interested audience for his second meeting at Derby. He and Sister Himsworth report an excellent interest in the studies presented, and are looking forward to a material strengthening of the membership in that city. There may be some who have friends in Derby, or other places where efforts are being conducted. If so let us have their names and addresses and we will see that the individuals are visited. A new Sabbath-keeper in America has put us in touch with his family in

Sunderland. Brother Bailey has visited them and reports a most encouraging reception.

WITH a united effort we can call a decided halt in the process of losing our membership, establish the wavering, and reclaim some who have become discouraged. We must not leave a single stone unturned this year to put the North England Conference on a stronger footing. I would like to request that if any one knows where we are losing ground, even in a single case, he will communicate the facts to me, and let us try to remedy the situation.

By resolute endeavour to hold everyone we have, and to gain all whom we possibly can, we shall gradually see our membership take on a more satisfactory appearance. W. T. BARTLETT.



### Grimsby's Revival

THE readers of the WORKER will be interested to hear of the progress of God's message in this, the world's largest fishing port. Grimsby is intimately and inseparably connected with the beginnings of our work in Britain. Here it was that Pastor A. Allen John began evangelistic work in the north of England as far back as 1882. Daily we pass the place where *Present Truth* was first published in 1884. During these early years Grimsby, then the headquarters of our work, was frequently favoured by the presence of our early pioneers. Mrs. White herself conducted open-air meetings close to what is now the town market place.

We felt it an honour when called to labour in a place so rich in memories. At rather short notice we located in Grimsby last October, and at once commenced evangelistic meetings in a large centrally situated cinema, seating over one thousand people. From the first our services arrested the attention of the public, and every Sunday, with one exception, our audiences increased in size until, at the special Armistice service, eleven hundred people filled the hall. The Spirit of God was manifestly present on this occasion, when we preached on the glorious message and hope of the resurrection, under the title, "The Silence of the Dead! Can it be broken?" The following Sunday witnessed a gathering of nearly one thousand interested hearers when "Grimsby's Greatest

Peril!"—the Romish menace—was discussed.

The Sabbath has now been presented and a good number are regularly attending Sabbath services. We have been not a little encouraged by the notes and letters received which tell of souls having been helped and led to the Saviour. An efficient staff of ten stewards has done excellent work during the cinema campaign, some coming as far as sixteen miles to assist us each Sunday.

Our associate worker, Sister M. Basher, is rendering valuable assistance and is very busy visiting her large list of interested people. While the first rush was on Sister Casey kindly came over from Lincoln two days each week to help. We

ask your prayer-help on behalf of the large number of friends in whose homes we are visiting and giving Bible studies each week, that many may take a decided stand with God's people.

Besides our work in Grimsby we have charge of the companies at Skegness and Ulceby. In this latter place stands the first church built by Seventh-Day Adventists in this country. Originally a flourishing centre, it is to-day but a silent memorial of a glorious past. Early in the spring we hope to start some aggressive work in the old building, which for many years has been used only by a faithful few.

Remember us as we press on in His service here.

C. A. REEVES.

## South England Conference

Office Address: Eagle House, 395 Holloway Road, London, N.7.

President: Pastor O. M. Dorland.

H.M., S.S., & M.V. Sec.: F. W. Goodall.

Secretary-Treasurer: H. D. Clarke.

F.M. Sec.: B. Belton.



### Notes from the President

PASTOR MORRISON reports a good interest at his first meeting at Thornton Heath. His collection was £2 15s., and fifty names were handed in for literature.

PASTOR H. W. McCROW is finding a ready entrance into the homes of interested people at Maidstone.

BROTHER TIMPANY has commenced special services in the New Walthamstow Church which was dedicated on Sabbath, January 25th.

A GOOD interest is still maintained in the efforts being conducted by Pastor Bevan in West London and Pastor Tonks at Reading.

A VERY pleasant morning hour of worship was spent with the colporteur evangelists at their Institute at Stanborough Park. They were of good courage in their work. We ask you to remember these faithful, self-supporting workers in your prayers.

PASTOR A. K. ARMSTRONG has taken over the work of the North London Church and there is every prospect of advance in this important centre of influence.

HAVE you contributed to the Endowed Bed Fund? If not, do not neglect or forget this worthy cause. Give your contributions, whether large or small, to your church treasurer, or send in to the conference office. Thank you!

O. M. DORLAND.

### Bristol Church Building Fund

It is with grateful hearts that the Bristol Church records the providence of God in connection with the Church Building Fund during 1929.

During the year loans have been repaid to the amount of £444. Some substantial amounts were donated, and others honoured the pledges made. We would mention the work of the Christmas carol party who collected the sum of £6 10s. for this purpose.

We render our best thanks to the British Union Conference for its generous help. Truly we can say, "The Lord hath done great things for us, whereof we are glad."

It is with confidence that we look to 1930 to finish the task with God's help, and we hope that our experience will encourage other churchmembers in the work of building sanctuaries in which to worship the God of heaven and earth.

T. BANMISTER.

### Plymouth Good Health League

ON January 8th the Plymouth Good Health League held its monthly meeting in the Abbey Hall.

The lecture of the evening was given by Pastor Lane, who dealt with the subject, "Constipation: Its Causes and Cure."

A number of appetizing vegetarian dishes had been prepared, and after being described these were served to the audience, who did full justice

to them, and there were many inquiries for recipes.

It was gratifying to see the interest manifested in our health principles, and we trust that much good may be done by these meetings.

E. J. WHITING.

---

## Irish Mission

---

### Greetings!

WE send to all our members in Ireland the best of good wishes for 1930. May this year be one of health and prosperity to all. Let us earnestly seek our heavenly Father for His blessing and power so that 1930 may be a year of loyal service and devotion to the cause of Jesus Christ.

Here are a few items that will reveal a little of the story of 1929:

**MEMBERSHIP.**—Twenty-three members were added by baptism and vote. This is the highest number so added during the past *seven years!* Coming to Ireland as we did late in 1928 we felt that a too hasty dealing with questionable names would not be wise. So the adjusting of our roll took place during 1929. We also discovered that a comparatively large number were resident in other fields. In some cases they had been gone from Ireland for years. These names were transferred and others dropped for apostasy. We have also during the year laid to rest in Jesus a number of Ireland's faithful members. We are grateful that our gains not only made up for these losses but left a balance on the right side.

**TITHE.**—The tithe shows a gain of £202, an increase of 38 per cent over the figure for 1928.

**SABBATH-SCHOOL.**—A gain of almost £100, an increase of 60 per cent over the 1928 total.

**YOUNG PEOPLE'S OFFERINGS.**—A loss of £3 17s. 2d. No young people's offerings were received from Belfast during the whole of 1929. They gave £6 17s. 8d. during 1928; hence our loss. The rest of the Mission recorded a gain.

**TOTAL OFFERINGS.**—A gain of about £150, an increase of 32 per cent over the figure for 1928. While every other field in the British Union has increased in membership during the past seven years, Ireland is unique in the fact that it only had 68 per cent of its 1922 membership to help in the battle of 1929. Thus we are, with real cause, thankful for the story of the past year.

To God we give the glory, and hearty thanks to all in Ireland who so nobly contributed to the measure of success attained. Work will be continued in Dublin and Belfast and we hope to open up new work in Coleraine and district. We show a small gain on our operating for 1929, while wiping out a deficit from 1928.

We go forward in faith, trusting our heavenly Father. We earnestly ask you for your prayers

and loyal support during the days before us. Let us pull together for the salvation of souls.

S. G. JOYCE.

---

## Welsh Mission

---

### An Encouraging Retrospect

WE can but praise God as we look over the statistical report of the Welsh Mission for 1929.

HARVEST Ingathering returns place Wales at the head of the British Union in terms of percentage increase. Contrary to the last report, Wales showed an increase of over twenty-nine per cent, the total being no less than £172 over that for 1928.

WE took on extra workers last year, and the Lord sent us the substantial tithe increase of almost £550.

THERE are one or two slight decreases in specific offerings, but, in our total offerings to missions, we raised almost £220 more than the previous year. We do devoutly praise God for this unprecedented advance, and we courageously set our hearts to tackle the problems that confront us.

OUR membership was rigorously pruned during last year, so that we show a decrease of eighteen members for the year. There are a goodly number preparing for baptism, and some quite ready, but we need to maintain constantly the spirit of soul winning throughout our ranks.

#### YOUR EASTER HOLIDAY

THE Annual Meeting of the Welsh Mission this year is to be held at Easter, in Cardiff. Why not plan to take your holiday at that time with us? Think and plan ahead, and you will be well rewarded.

#### NORTH WALES

NEW members are being gathered in North Wales, where Brother Bird has been breaking new ground. God is with His servants, and, at this critical juncture, we invite your prayer interest in this and other evangelistic endeavour.

#### A NEW CAMPAIGN

BROTHER COOPER opened a campaign in Pontypool Town Hall on January 26th, where, in spite of the worst conceivable weather, one hundred persons were present and a good interest was manifested. May God be with His servants there.

H. W. LOWE.

---

DON'T FORGET. We are ready for those "Quick dispatch" printing orders for next effort. Also commercial printing. Electric Press, Bentham, Lancaster.

DR. O. B. DEITER, having relinquished his appointment at Champneys, has acquired consulting rooms at flat 1, 40 Park Lane, London, W.1 Telephone: Mayfair 3357.

# Statement of Tithes and Offerings for British Union SOUTH ENGLAND CONFERENCE

NAME OF CHURCH OR COM'Y	Memb. bapt.	TITHE	Tithe per Capita	Sabbath-School Offerings	19th Sabbath Offering	Young People's Offering	Annual Offering	Harvest Ingathering	Week of Sacrifice	Miscellaneous & Big Week	TOTAL OFFERINGS	Offerings per Capita
Bath .....	84	29 4 1	17 2	3 9 1	3 10 10	1 3 9	2 2 0	39 15 3			50 0 11	1 9 5
Bournemouth .....	65	75 13 6	1 3 3	9 8 11	3 5 2	8 3	4 0 0	54 3 7			71 6 11	1 1 11
Brighton .....	74	108 16 7	1 9 5	10 13 8	9 17 4		5 2 5	53 5 5		2 14 6	81 13 4	1 2 0
Bristol .....	117	103 4 5	17 8	13 3 0	6 6 4	13 3	3 3 0	65 17 8		2 0	89 5 3	15 4
Cambridge .....	34	37 7 2	1 2 0	2 12 8	12 4		1 10 4	28 2 0			32 17 4	19 0
Croscombe .....	23	27 4 9	1 3 8	4 10 2	1 3 0	11 1	2 3 0	2 8 9			11 2 0	9 8
Exeter .....	12	30 1 6	2 10 1	8 9 9	6 2 7		2 2 6	22 12 6	1 8 0		40 15 4	3 7 11
Gillingham .....	30	64 9 9	2 3 0	12 17 1	3 15 4	9 7	6 9 5	56 3 6	2 1 0		81 15 11	2 14 6
Hastings .....	25	50 1 5	2 0 0	5 16 9	14 7		1 8 6	13 2 9			21 2 7	16 11
LONDON:												
Edmonton .....	24	29 2 8	1 4 5	3 6 8	2 2 0		2 2 6	14 6 6			21 17 8	18 3
Forest Gate .....	28	32 14 4	1 3 4	5 6 4	2 0 4		7 8 0	25 11 4			40 6 0	1 3 9
London N. ....	210	220 12 1	1 1 0	29 13 5	10 16 9	1 15 11	25 7 2	120 19 6			188 12 9	18 0
London N.W. ....	31	30 10 5	19 8	6 10 10	2 10 0		4 11 1	41 8 5			55 0 4	1 15 6
London West .....	80	76 7 1	1 10 6	15 11 8	4 6 6	3 9	5 1 0	89 0 9			114 3 8	2 5 8
London S. ....	42	83 13 8	1 19 10	10 6 9	3 7 4	15 2	5 1 9	29 2 8			48 13 8	1 3 2
Walthamstow .....	72	137 6 0	1 18 2	19 5 1	8 14 11	11 0	118 13 6	94 18 2			242 2 8	3 7 3
Wimbledon .....	79	105 6 6	1 6 8	14 4 3	12 4 11	16 1	10 15 9	89 11 5			127 12 5	1 12 4
Luton .....	36	24 0 6	1 3 4	5 5 8	1 0 7		1 4 6	42 19 8			50 10 5	1 8 1
Plymouth .....	104	184 4 11	1 3 6	22 11 6	4 16 11	2 0	10 10 0	52 4 4			90 4 9	17 4
Portsmouth .....	82	74 11 9	18 2	9 14 7	2 16 4	2 4 3	2 13 0	42 4 3			59 12 5	14 6
Reading .....	49	24 11 8	10 0	3 0 0	1 3 1	16 0	1 12 0	13 0 9			19 11 10	8 0
Southend .....	61	61 9 2	1 0 1	12 2 0		4 9	8 2 0	63 6 10		2 13 6	86 9 1	1 8 4
Southampton .....	72	71 14 4	19 11	10 12 2	2 14 8	1 2 4	5 17 1	79 19 4			160 5 7	1 7 10
Southstoke .....	16	32 5 10	2 0 4	5 15 6	3 19 0	1 2 3	7 0 6	43 10 0		2 6	61 9 9	3 16 10
Stanford P. ....	287	786 13 0	2 11 4	77 13 0	26 13 1	5 3 1	46 0 9	202 17 9	7 6 9		365 15 3	1 5 6
Worford .....	110	169 8 10	1 8 11	28 19 0	18 9 3	1 19 2	1 5 0	110 9 7			156 2 0	1 8 4
Clapham .....	28	36 15 5	1 6 3	3 13 6	5 6		3 2 6	31 13 3			38 14 9	1 7 8
Croydon .....	31	56 13 0	1 15 6	5 4 3	5 19 9		12 5 0	31 4 2		4 0	54 17 2	1 15 5
Dorchester .....	6	9 2 7	1 10 5	1 1 0	1 2 0		1 7 0	4 16 6			8 6 6	1 7 9
Dereham E. ....	14	14 6 10	1 0 6	1 10 4	5 0		1 15 5	15 11 2			19 1 11	1 7 3
Romford .....	8	8 2 0	1 0 3	1 1 0	12 6		1 0 6	18 18 0			21 12 0	2 14 0
St. Mabyn .....	7	8 11 3	1 4 5	3 17 0	1 1 0		2 0 5	21 15 1			28 13 6	4 1 11
Isolated .....	323	699 1 0	2 2 7	82 4 10	23 9 9	5 0	44 4 3	237 5 9			377 9 7	1 3 0
Totals	2189	3398 8 0	1 11 6	449 12 3	171 4 8	20 6 8	357 1 10	1842 6 7	10 15 9	5 16 6	2857 4 3	1 6 6
Totals 1928	2079	3354 2 9	1 12 3	430 6 11	237 2 7	24 7 6	445 0 3	1836 2 2	14 7 6	8 1 0	3045 7 11	1 9 3
Increase	110	39 5 3	-9	19 5 4	-65 17 11	-4 0 10	-87 18 5	-43 15 7	-3 11 9	-2 4 6	-188 3 8	-2 9

# NORTH ENGLAND CONFERENCE

NAME OF CHURCH OR COM'Y	Memb. bapt.	TITHE	Tithe per Capita	Sabbath-School Offerings	19th Sabbath Offering	Young People's Offering	Annual Offering	Harvest Ingathering	Week of Sacrifice	Miscellaneous & Big Week	TOTAL OFFERINGS	Offerings per Capita
Birmingham S. ....	42	21 1 7	10 6	4 17 11	2 8 4	12 6	3 10 2	18 14 11			30 3 10	14 5
Bradford .....	7	9 14 9	1 7 10	2 1 0	13 0	5 4	9 0	5 16 11			9 5 3	1 6 6
Coventry .....	33	52 12 1	1 11 11	8 18 8	1 7 8	18 11	2 4 1	53 7 0			66 16 4	2 0 6
Derby .....	54	51 5 5	19 0	6 4 8	3 3 2	14 4	6 2 0	71 5 3			87 9 5	1 12 5
Gateshead .....	44	10 15 10	4 11	5 19 9		11 3	15 0	29 6 3			36 12 3	18 11
Grimsby .....	9	2 1 6	4 7			1 9		8 5 10			8 7 7	18 7
Handsworth .....	80	114 8 10	1 8 7	6 8 6	2 6 6		7 10 6	54 1 10			70 7 4	17 7
Hull .....	107	188 11 0	1 5 11	15 17 5	5 18 2	18 7	6 14 0	55 1 6		5 0	84 14 8	15 10
Kettering .....	37	38 14 9	18 3	6 9 1	17 2		2 18 6	37 3 10			47 8 7	1 5 8
Leeds .....	108	112 18 0	1 0 11	14 18 6	3 12 10	1 12 7	5 9 0	72 17 6			97 10 5	18 1
Leicester .....	29	85 15 7	1 4 8	8 15 5	1 5 10	1 18 7	2 3 8	25 18 1	2 0		40 3 7	1 7 8
Liverpool .....	90	80 18 9	18 0	13 14 7	10 3 6	3 1 2	2 4 0	93 7 2			122 10 5	1 7 3
Liverpool N. ....	81	55 5 0	1 15 3	5 13 5	18 11	15 0	3 7 4	29 13 0			40 7 8	1 6 1
" S. ....	70	78 5 8	1 2 4	11 19 3	3 0 3	1 8 3	6 17 6	69 2 0			92 7 3	1 6 5
Newcastle .....	81	89 0 4	1 2 0	11 10 4	2 15 11	16 3	3 6 0	46 0 4			64 8 10	1 2 0
Nottingham .....	79	97 9 2	1 4 8	15 9 7	4 5 4	1 11 2	4 3 1	86 9 1	2 1 0		113 19 3	1 8 10
Rotherham .....	41	42 11 8	1 0 9	3 9 11		15 2	1 2 10	19 19 8			26 5 7	1 2 10
Rushden .....	19	18 8 0	19 4	4 10 0		14 3	3 14 0	6 12 0			15 10 3	16 4
Sheffield .....	58	69 19 10	1 3 9	18 4 10	2 5 6		6 1 9	62 2 10	2 0		83 17 5	1 8 11
Stoke .....	17	19 3 4	1 2 7	4 14 11	1 12 3	4 0	1 17 3	24 16 7			33 5 0	1 19 1
Wellingboro .....	22	23 13 9	1 1 6	5 1 1	1 17 0		1 4 6	9 2 1			17 4 8	15 8
Wolverhampton .....	18	22 17 10	1 5 5	2 14 0	1 7 0		1 18 0	6 8 4			12 7 4	13 9
Worcester .....	46	61 18 0	1 7 3	4 18 7	2 18 0		4 0 0	31 5 9			43 2 4	19 2
York .....	25	46 9 4	1 17 2	7 12 1	6 10 3	8 11	1 10 0	78 11 8			94 12 11	3 15 9
Blackburn .....	6	2 5 0	7 6	1 12 0	6 0			5 16 10			7 14 10	1 5 10
Bromsgrove .....	10	7 19 6	15 11	1 0 3		3 3		14 12 1			15 15 7	1 11 7
Burnley .....	7	1 8 3	4 0	1 0 8				4 5 5			5 6 1	15 2
Hudders' d. ....	9	16 15 0	1 17 3	1 17 4	11 0		15 0	78 4 0			81 7 4	9 0 10
Lincoln .....	36	17 11 0	9 9	4 17 4	1 2 9	9 11	2 14 5	17 7 8			26 12 1	14 9
Mansfield .....	18	19 11 5	15 1	2 8 5	8 8		5 9 8	8 3 9			11 6 7	12 6
Middlebro' .....	10	25 16 2	2 11 7	2 1 2	11 3		1 13 5	8 11 1			12 16 11	1 5 8
North'pton .....	14	8 3 0	11 3	1 14 1	5 0		3 6	5 9 1			7 11 8	10 10
Scarboro' .....	16	15 6 6	19 2	3 2 2	17 2		12 0	36 11 0			41 2 4	2 11 5
Skarbness .....	15	25 10 9	1 11 5	3 0 0	1 7 7			4 17 4			9 4 11	12 4
Southport .....	11	5 16 6	10 7	1 9 0	12 0		3 0	3 17 7			3 1 7	5 7
Stockton .....	5	4 11 0	18 2	1 2 11	9 3		1 3 1	9 14 4			12 9 7	2 9 11
Sutton-in-A .....	8	12 5 1	1 5 8	3 1 10	1 1 5		1 7 6	17 8 6			22 19 3	2 17 5
Ulverston .....	10	6 10 9	13 1	1 6 8	9 6		3 0	2 15 0			4 14 2	9 5
W. Har'pool .....	11	25 12 1	2 6 7	4 3 9	2 16 0		1 6 0	8 14 6			17 0 3	1 10 11
Isolated .....	180	283 3 1	1 11 6	33 12 9	6 10 4		16 5 6	-89 3 10		11 3	250 16 5	1 7 10
Totals	1512	1758 5 1	1 3 0	252 13 10	77 5 6	17 8 2	105 14 4	1408 1 5	6 16 3	18 3	1868 17 9	1 4 6
Totals 1928	1538	1807 19 2	1 3 5	268 7 11	113 14 5	11 17 8	127 8 11	1362 1 6	5 3 0	12 4	1889 5 9	1 4 5
Increase	18	-49 14 1	-5	-15 14 1	-36 8 11	5 10 6	-21 14 7	45 19 11	1 13 3	5 11	-20 8 0	1

# Conference for the Quarter ended Dec. 31, 1929

## WELSH MISSION

NAME OF CHURCH OR COMPANY	Memb. pers p	TITHES	Tithe per Capita	Sabbath-School Offerings	13th Sabbath Offering	Young People's Offering	Annual Offering	Harvest Ingatheri'g	Week of Sacrifice	Miscellaneous & Big Week	TOTAL OFFERINGS	Offerings per Capita
Blaenavon....	5	5 13 7	1 2 8	1 13 0	12 0		10 8	1 10 6			4 6 2	17 8
Cardiff.....	69	79 10 9	1 3 0	9 2 8	9 13 10	1 11 3	10 10 6	71 13 4			192 11 7	1 9 9
Milford Haven	7	8 10 6	1 4 4	3 5 0	10 0		3 0 0	6 1 5			12 16 5	1 16 6
Newport.....	99	108 1 11	1 1 10	13 16 11	6 15 8	10 10	5 13 4	137 19 2			164 15 11	1 13 8
Porth.....	11	6 8 5	11 8	1 11 1	6 8		2 6	2 16 1			4 16 4	8 9
Swansea....	47	90 19 0	1 18 8	8 5 8	19 9	6 6	1 19 0	73 9 10			85 0 9	1 16 2
Aberdare ..	17	17 1 10	1 0 1	2 4 10	1 0 0		1 7 3	8 13 2			13 5 3	14 5
Barry Dock	9	22 12 0	2 10 2	2 19 3	2 2 0			13 3 10	1 7 2		19 12 8	2 3 7
Dowlais ..	6	1 5 3	4 2	1 11 4	7 3			10 0 5			11 19 0	1 19 10
Henllan ..	6	3 19 6	13 3	2 12 5				7 5 0			9 17 5	1 2 11
Llanelli ..	8	3 18 3	9 9	19 7	10 0			2 9 6			3 19 1	9 10
Rhos.....	10	12 11 8	1 5 2					16 9 0			16 9 0	1 12 10
Watsville ..	6	9 10 5	1 11 9					6 0 0			6 0 0	1 0 0
Isolated.....	102	137 19 2	1 7 0	16 15 2	2 5 0		11 19 6	77 9 3	2 0 0		110 8 11	1 1 8
Totals	402	508 2 3	1 4 2	64 16 11	25 2 2	2 8 7	35 2 9	435 0 6	3 7 2		565 18 1	1 6 11
Totals 1928	420	474 6 7	1 2 9	78 18 2	30 11 1	2 5 10	38 17 5	418 7 2	1 0 0	8 0	568 7 8	1 7 1
Increase	-18	33 15 8	1 5	-12 1 3	-5 8 11	2 9	-3 14 8	16 13 4	2 7 2	-8 0	-2 9 7	-2

## SCOTTISH MISSION

NAME OF CHURCH OR COMPANY	Memb. pers p	TITHES	Tithe per Capita	Sabbath-School Offerings	13th Sabbath Offering	Young People's Offering	Annual Offering	Harvest Ingatheri'g	Week of Sacrifice	Miscellaneous & Big Week	TOTAL OFFERINGS	Offerings per Capita
Edinburgh ...	59	24 6 7	8 8	8 11 5	1 19 3		1 7 6	60 0 7			71 18 9	1 4 4
Glasgow.....	134	98 15 4	14 8	16 4 1	4 13 8		6 8 7	121 6 1			148 12 5	1 2 2
Kirkcaldy...	13	15 4 5	1 3 5	3 1 7	16 0		1 9 6	17 3 7			22 10 8	1 14 7
Clydebank ..	19	8 1 1	1 8 5	3 8 0	4 3		1 9 9	1 18 8			6 0 8	6 4
Dundee.....	8	11 10 0	1 8 9	2 2 2	18 6		1 5 0	12 5 0			16 10 8	2 1 4
Stirling.....	16	45 7 6	2 16 7	2 18 8	2 2 9		1 5 0	10 2 9			16 9 2	1 0 7
Isolated.....	50	100 1 11	2 0 0	11 18 4	9 9		2 11 0	26 19 11			41 19 0	16 9
Totals	299	393 6 10	1 0 4	48 4 3	11 4 2		14 16 4	249 16 7			324 1 4	1 1 9
Totals 1928	298	240 13 3	16 1	48 2 11	16 12 2	1 0 0	18 5 0	198 11 3			282 11 4	18 2
Increase	1	62 13 7	4 3	1 4	-5 8 0	-1 0 0	-3 8 8	51 5 4			41 10 0	3 2

## IRISH MISSION

NAME OF CHURCH OR COMPANY	Memb. pers p	TITHES	Tithe per Capita	Sabbath-School Offerings	13th Sabbath Offering	Young People's Offering	Annual Offering	Harvest Ingatheri'g	Week of Sacrifice	Miscellaneous & Big Week	TOTAL OFFERINGS	Offerings per Capita
Belfast.....	58	93 8 10	1 12 2	13 8 2	2 3 1		3 13 1	37 3 4			56 7 8	19 5
Dublin.....	31	41 1 9	1 6 6	8 11 7	3 2 11	15 7	3 14 10	42 4 9			58 9 8	1 17 8
Kimovle....	2	1 19 6	4 11	1 15 6	2 6		12 6	1 4 0			3 14 6	9 4
Magherafelt..	7	67 0 0	9 11 5	10 14 0	13 16 0		6 5 0	2 0 0			32 15 0	4 13 7
Isolated ...	39	40 18 10	1 1 0	4 4 0	5 6		5 0 6	18 13 6			28 3 6	14 5
Totals	143	244 8 11	1 15 5	38 18 3	19 10 0	15 7	19 5 11	101 5 7			179 10 4	1 6 0
Totals 1928	138	117 11 5	16 2	25 14 0	8 19 6	1 8 7	10 16 2	136 18 5			183 11 8	1 6 0
Increase	5	126 17 6	19 3	12 19 3	10 10 6	-13 0	8 9 9	-35 7 10			-4 1 4	
Stanbo'h Press		55 8 0										
Grand Total	4545	6262 19 1	1 7 8	854 0 6	304 6 6	40 19 0	532 1 2	4036 10 8	20 19 2	6 14 9	5795 11 9	1 5 4
G. Totals 1928	4473	5594 13 2	1 6 9	849 9 11	406 19 9	40 19 7	640 7 9	4001 15 6	20 10 6	9 1 4	5369 4 4	1 6 8
Increase	72	268 5 11	11	4 10 7	-102 13 3	-7	-108 6 7	34 15 2	8 8	-2 6 7	-173 12 7	-1 4

FOR SALE—Lantern (minus burner) and 300 slides, mostly coloured Subjects: Old and New Testament, prophecies, etc. Cost £25. Selling price, £8 10s od. Write: S. J. Wolfe, 10 Lansdowne Street, Burnley, Lancs

WANTED.—Young woman for domestic work Apply or write: Mrs. Clark, George Street, Hedon, Hull

HEALTH food business for sale. Excellent position in main street of south coast town Owned by Adventists Established 13 years. Apply: H L, 17 Beechwood Avenue, Plymouth.

WANTED.—Cook-general and house-parlourmaid for small modern house. Good wages and outings. References required. Sisters or friends not objected to Write: J., 2 Honeybourne Road, W. Hampstead, London, N.W

WANTED.—Situation as children's nurse or mother's help. Fond of children Age 15. Write: Miss J West, Willow Farm, North End, Goxhill, Lincolnshire

WANTED.—Situation in a family by young French-Swiss lady desiring to learn English in return for French lessons and help in home. Write: Miss Binns, Stanborough College, Watford, Herts.

## The Stanboroughs Nurses' Training Course, 1930-1931

THE course of three years commences June 1st, and there will be vacancies for a number of young ladies who will have reached the age of twenty years during the first year of the course. Those desirous of applying to enter the course should communicate immediately with Mr. N. H. Knight, The Stanboroughs, Watford, Herts.

Applications will also be received for robust, healthy young ladies for domestic work. Apply as above.

### SUNSET CALENDAR

	London	Nott'ham	Edin.	Cardiff	Belfast
Feb 14th	5 11	5 13	5 12	5 24	5 28
" 21st	5 24	5 26	5 27	5 37	5 43

# EDITORIAL NOTES

THE MISSIONARY WORKER is printed and published fortnightly in Great Britain by  
The Stanborough Press Ltd., Watford, Herts.

Editor: A. S. MAXWELL

Vol. 35. No. 3.

Copy for the next issue must reach us  
not later than Wednesday, Feb. 12th.

February 7, 1930

SIXTY colporteurs from all parts of England and Wales met at Stanborough Park from Jan. 24th to 31st for their annual Institute. It was the most successful gathering of its kind ever held. A splendid spirit of co-operation prevailed everywhere. The Stanborough Park Church opened its doors wide to welcome the colporteurs. The College authorities consented to allow them to take two meals a day with the students. The Stanboroughs management went to no small trouble to arrange for the special "Press tea" and the other institutions did all they could to make the visitors feel that they were more than welcome, and that their self-sacrificing labours are indeed appreciated by those at headquarters.

AN abundance of valuable assistance was available for the Institute. Pastor Weaks from the Division was, as usual, a wonderful help in giving the general instruction on salesmanship. Pastors Meredith, Bartlett, Dorland, Anderson, and others gave a strong lead in the presentation of spiritual topics. Pastor Joyce and his assistant field secretaries led out strongly in the essential features of drilling and coaching the colporteurs. There was also a splendid response from the colporteurs themselves. We have never seen quite

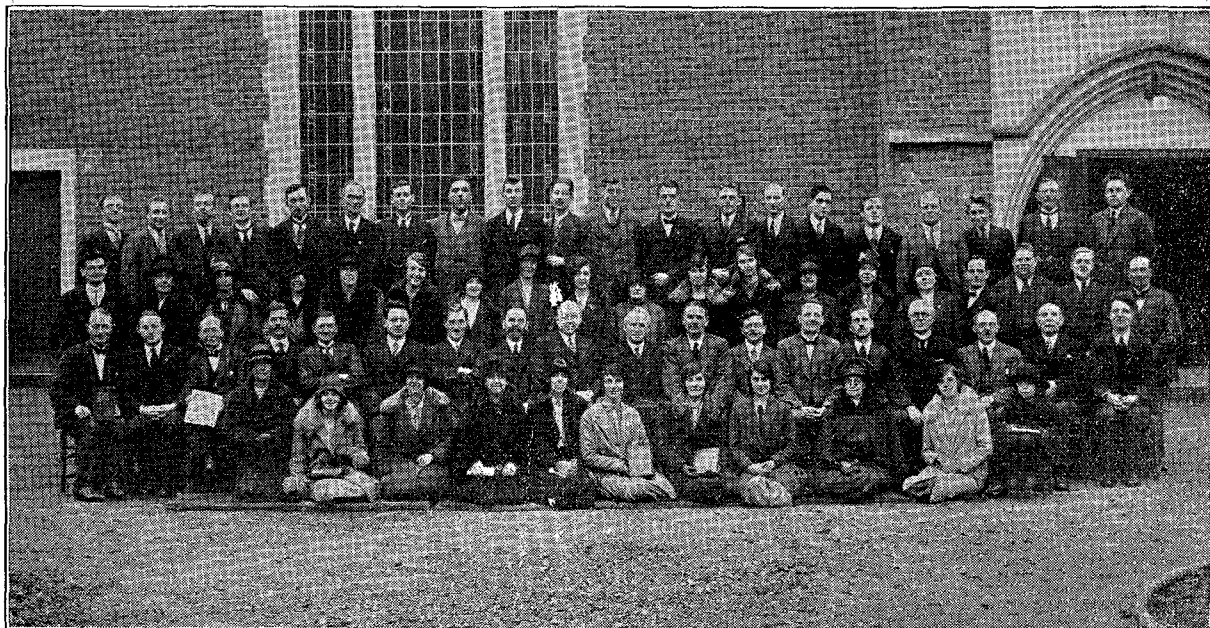
such a cheerful spirit of helpfulness manifest among them all. It is no exaggeration to say that some of the most valuable help given to the Institute came from those men who have been so greatly blessed recently in actual field work.

THE Institute closed on the Friday morning with a praise service. It was one of those meetings that are easy to start but hard to stop. So full of thankfulness and courage were the colporteurs that the meeting ran far beyond its allotted time. We believe that all have returned to their fields of labour filled with a new zeal and love for their work. Let us remember them all in prayer continually.

PASTOR F. W. JOHNSTON, who has come to this field from Canada, has lost no time in starting to work. He is planning a pioneer campaign in Bolton, where we trust he will be greatly blessed. We extend to him, on behalf of the WORKER family, a hearty welcome to this field.

PASTOR ROY ANDERSON, who is coming to this field from Australia, is, we understand, expected to arrive in April.

WE regret that lack of space has compelled us to hold over a number of obituary notices until the next issue.



Colporteurs of the British Union Conference at the Watford Institute, January 24-31, 1930.